

## 2 Wires Dual color 1515 LED strip 423LEDs/M DC24V



### ◆ Product Description:

- High density CCT color Adjustable LED strip has 423pcs 1515 LEDs
- With 4mm Width
- Cut-able every 4LEDs & 9.26mm
- All soldering Pads are very large, allowing you to easily cut and reconnect
- DC24V constant voltage operation
- Both ends have 2pin bare wires for powering
- 3M tape attached on backside of FPC



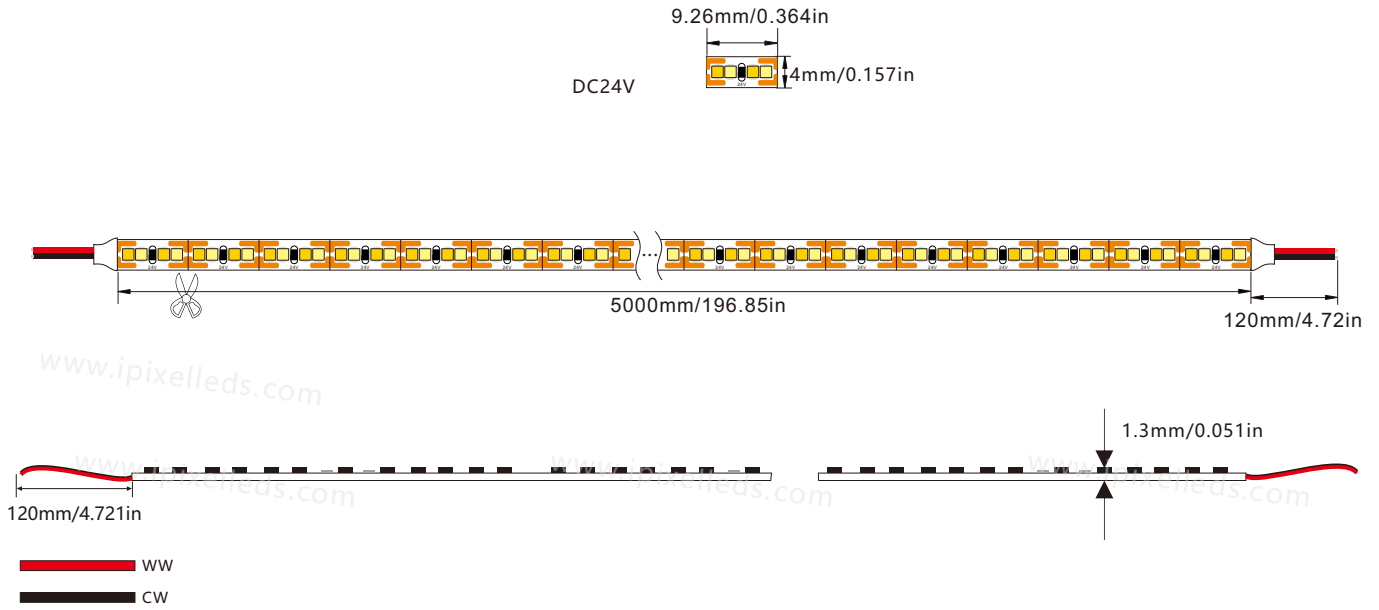
### ◆ Product Datasheet

Product Number	S004432UC2PZ
Operating Voltage	DC24V
Power/m	9W
SMD Type	1515
LED Qty/m	432
Cutting Length	9.26mm/4LED
Color	3000K+6500K
Luminance/m	W:720 WW:765lm
Material	FPC
Control	PWM
Beam Angle	120°
Size (mm)	5000x4mm
IP Rating	IP20/IP65
Operation Temperature	- 25 ~ 60°C

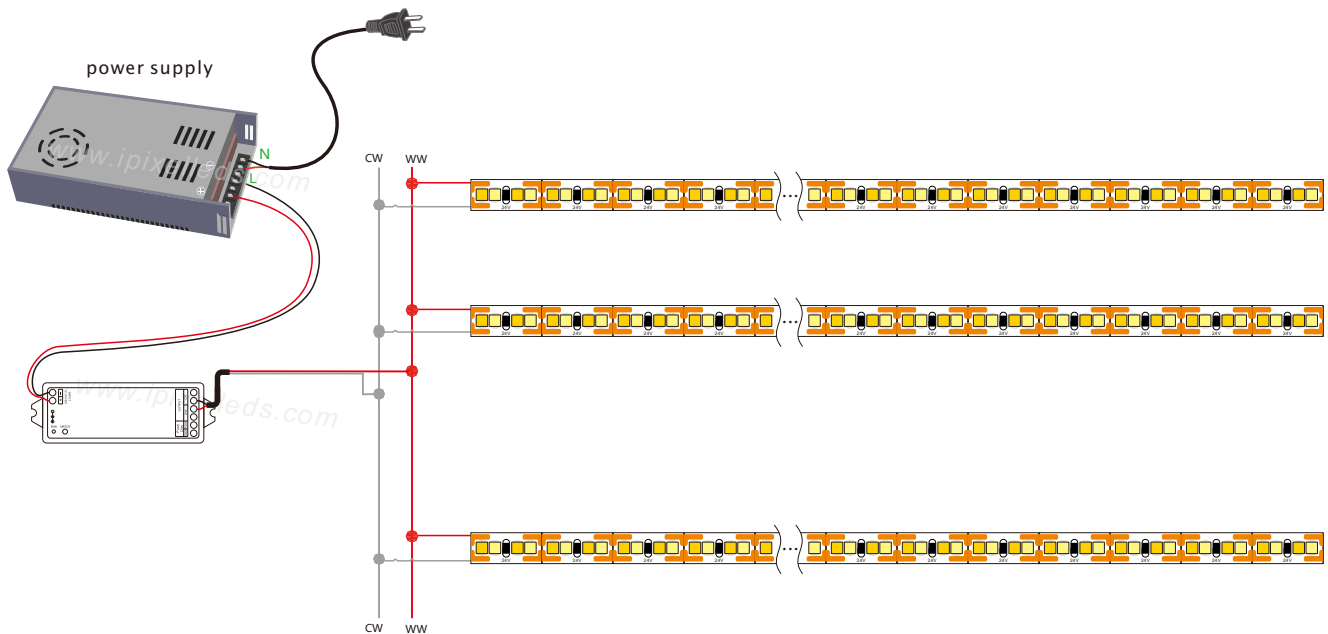
#### Remarks:

- 1.The above parameters were tested according to integrating sphere TM-30-15.
- 2.The output data is based on IP20 and one merter.
- 3.The data such as power etc,  $\pm 15\%$  tolerance is normal.
- 4.IP protection process causes changes in size, CCT and luminous flux.

## Outline Dimension (unit: mm/in)



## Wiring diagram



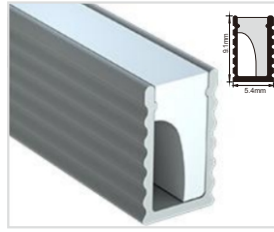
## IP Rating



### ◆ Related products:



Power supply  
XS-24V

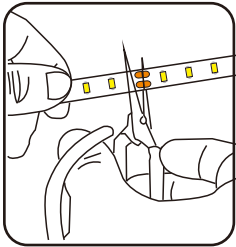


Alum profile  
0609

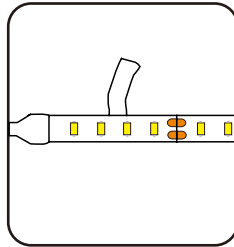


2 wires CCT Controller  
V2-S/R7-1

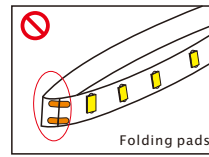
### ◆ Installation method:



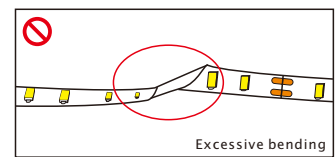
Can be cut



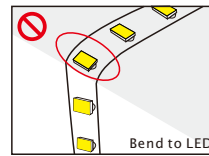
Tear off the 3M adhesive as need



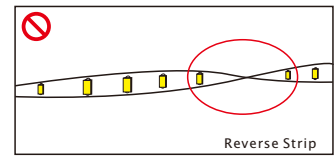
Folding pads



Excessive bending



Bend to LED



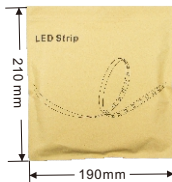
Reverse Strip

Distortion(Wrong)

### ◆ Product packaging



Reel



Antistatic bag

